

Student Guide – Respondus Lockdown Browser Re-installation: If you have an older version of Respondus Lockdown, you **must** uninstall the older version and install the latest version.

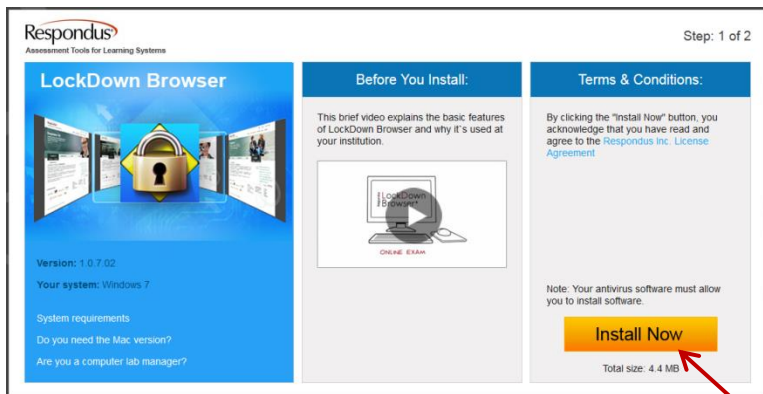
Link to Respondus Lockdown Browser

by Denise Hunt - Thursday, 26 June 2014, 1:17 PM

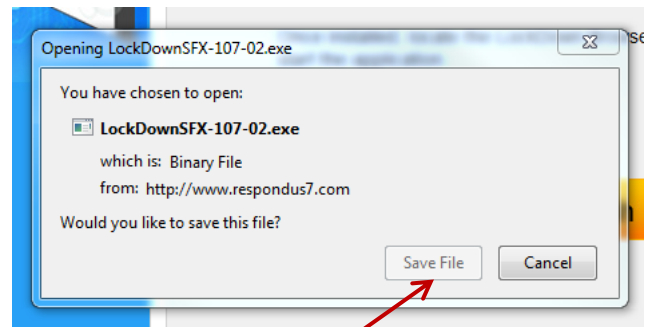
If the **lockdown** software is not loaded on the computer which the exam is being completed, it can be downloaded via a link prior to accessing the exam or you can download and install it by clicking on the image below:



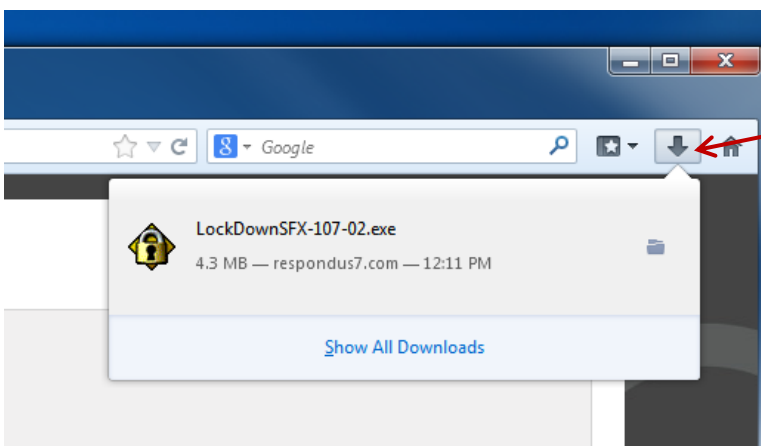
On the CNC Moodle homepage, click on the Respondus icon



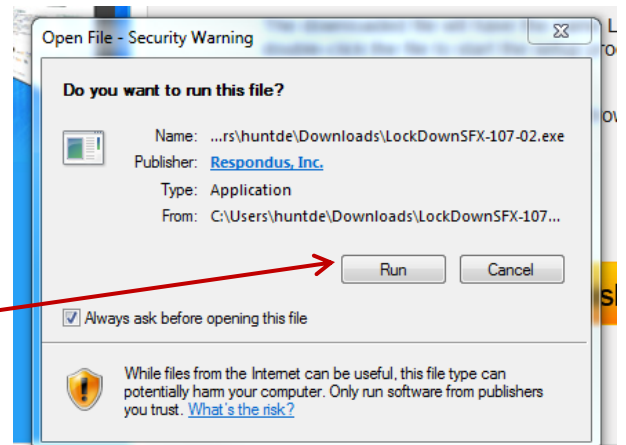
You will be taken to the above page, click "Install Now"



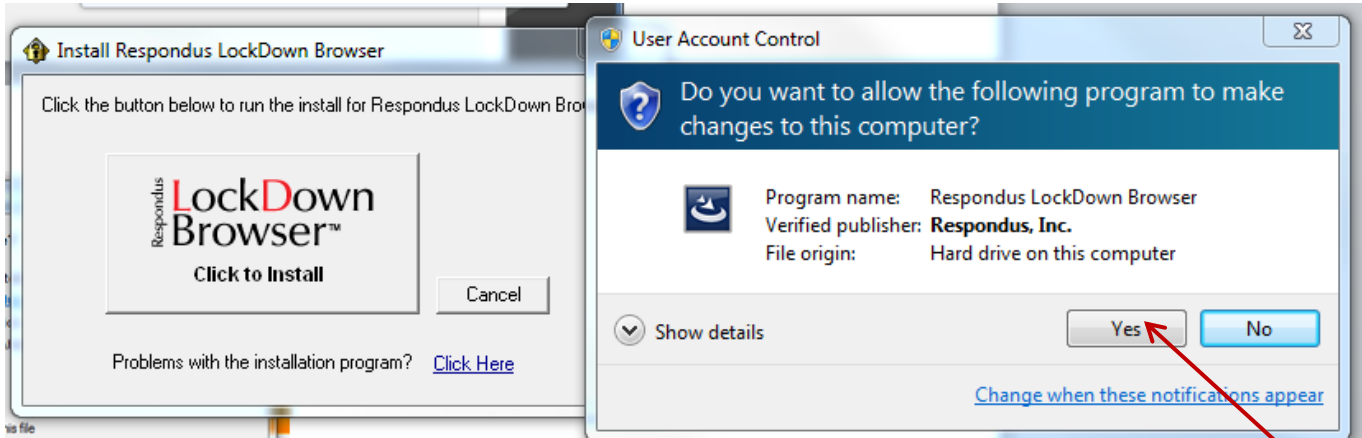
You will click on "Save File."



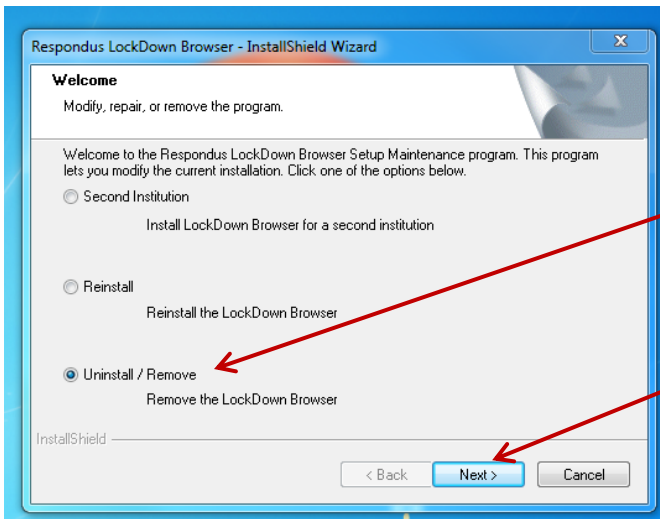
The lockdown file will save, if it disappears, click the arrow in your browser bar



Click "Run"

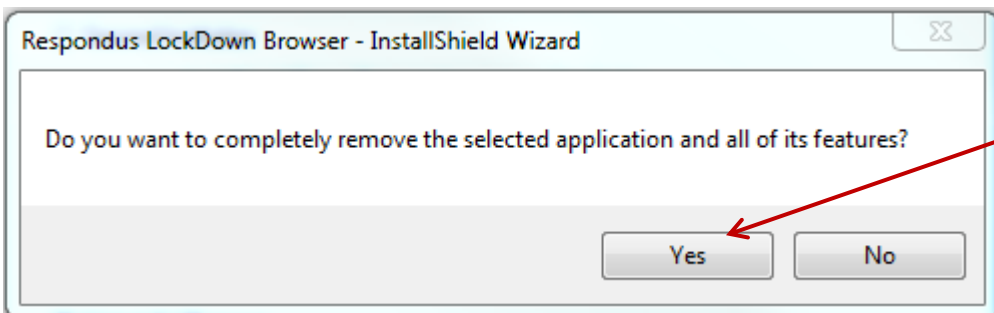
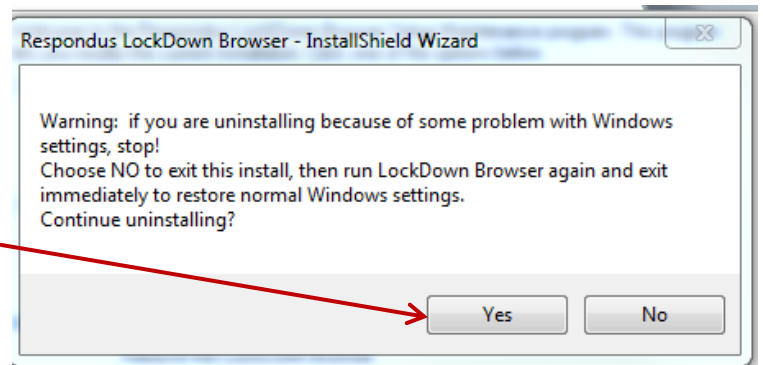


You will see a screen like the one above, click "Yes"

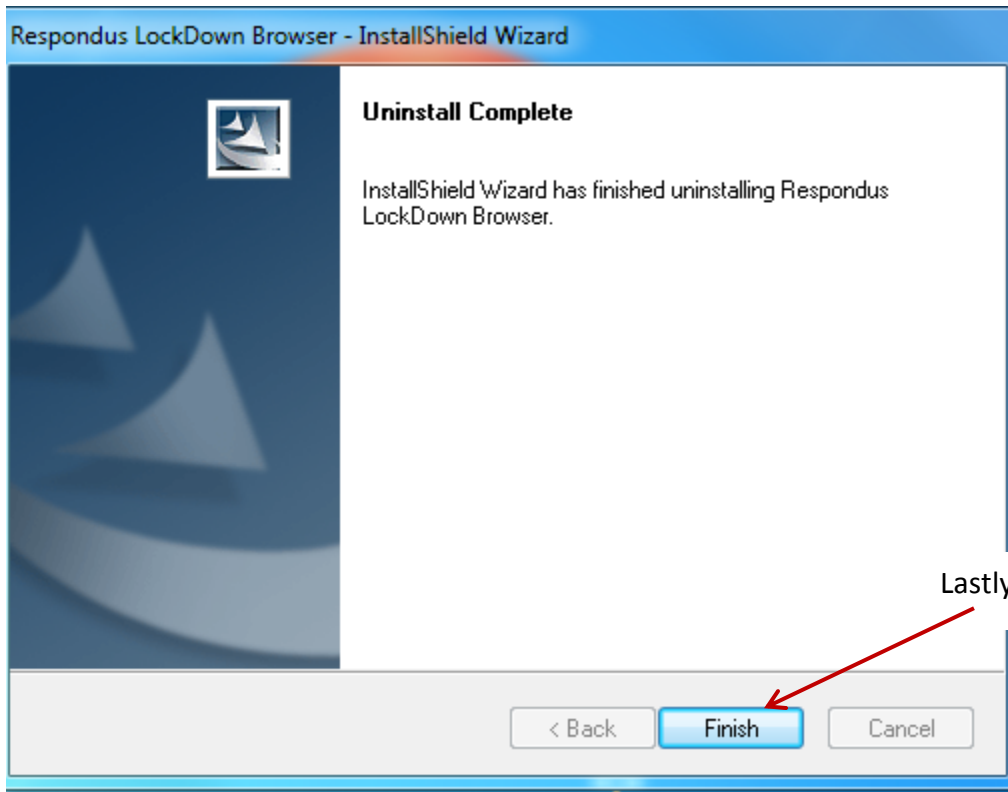


You will then choose to "Uninstall/Remove" Lockdown browser. Then click "Next"

At this point, choose "Yes"



Click "Yes" again to confirm removing the previous version of respondus.



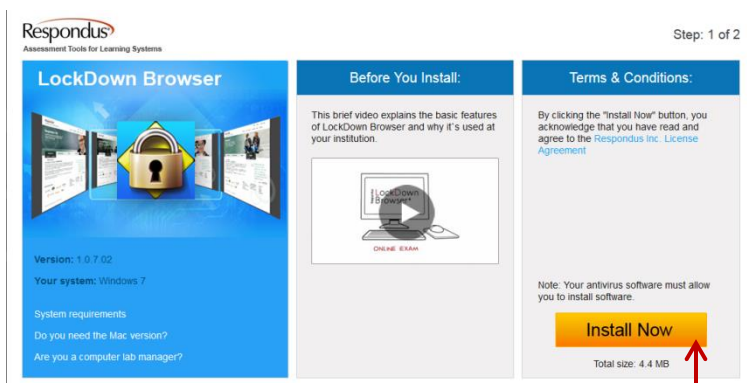
Lastly, click "Finish"

You will then have to go through the installation process again to install the newest version; go back to the Moodle homepage, click on the icon and download Respondus Lockdown Browser.

Link to Respondus Lockdown Browser

by Denise Hunt - Thursday, 26 June 2014, 1:17 PM

If the **lockdown** software is not loaded on the computer which the exam is being completed, it can be downloaded via a link prior to accessing the exam or you can download and install it by clicking on the image below:



You can now click "Install Now" and start the process.



Once the installation is complete, the above icon will appear on your desktop. You can then click this icon to launch the Respondus Lockdown Browser.